

# GEOPARK CHICHIBU

## Birthplace of Geology in Japan .....



Excursion in Chichibu at The Third Pan-Pacific Science Congress (1926)

In the Meiji era, which marked the dawn of modern geology in Japan, many students and scholars visited the Chichibu region. Starting with the Iwadatami rocks at Nagatoro referred to as the "window of Earth," a tour around Geosites where historic figures of the past have left their traces including Kenji Miyazawa who is a famous Japanese poet and writer of children's stories, and Dr. Heinrich Edmund Naumann who is a German geologist that contributed to modern geology in Japan will guide you through the history of Earth expounded by the great land of Chichibu.



Iwa-Datami and Chichibu Red Criff



Toraiwa (Tiger rock) and the Monument in memory of Kenji Miyazawa



Piemontite schist and Pothole

## Timeless Sanctuary .....



No.28 Fudasho Hashidatedo Temple and Limestone Criff



Stone Buddha in No.4 Fudasho Kinshoji Temple

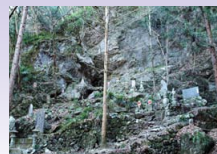
Chichibu is a land that has been venerated by many people since old times. Famous shrines referred to as Chichibu Sanja (three shrines of Chichibu) and many other temples feature many special locations, where visitors are imbued with a mystic feeling due to the unique landform, and they have been carefully preserved and passed down. By touring these special locations that have been prudently protected and passed down through the ages, you can embark on a spiritual journey while drawing connections between people's faith and mother Earth.



White Sandstone Criff in No.31 Fudasho Kannon-in Temple



"Ofuneiwa"(The Shiprock) in No.32 Fudasho Hoshio-ji Temple



Limestone of No.34 Fudasho Suisen-ji Temple

# Geo Stories

## Story of the Ancient Ocean .....



Skeletal specimen of Pareoparadoxia / The Unconformity of Maehara

In the ancient past, the Chichibu Basin was covered by the ocean. In this rich and abundant ocean, with mountains in the background, there were most likely large marine animals and fishes swimming around freely. Memories engraved from the past, when the land was still covered by the ocean, can be viewed from six cliffs. The fossil assemblage of marine animals that existed back then such as Pareoparadoxia and Chichibu whale have been designated as natural monuments of Japan. Let's transport through time back to when Chichibu was still covered by the ocean!



Torikata Turbidite



Yobake



Chichibu Sea of Clouds

## Life with Workings of the Earth .....



Chichibu Basin (from Minoyama Park)



Weaving of "Chichibu Meisen"

In all ages and time, the force that has invigorated this region has been the industries and multifaceted cultures that have developed through the blessings of the land. The history of the Chichibu Night Festival, which is the largest festival in Chichibu, and the challenges of Gennai Hiraga, a famous inventor of the Edo period, are both deeply linked with the story of the land. The numerous sightseeing spots in Chichibu, the famous local food, are all in fact linked with Geo!—We hope you will be able to find many surprising connections like these.



Chichibu Basin (from Hitsuji-yama Park)

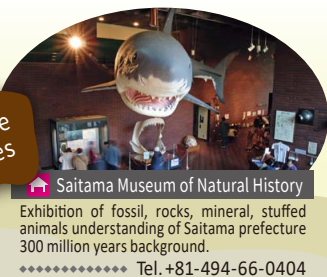


Chichibu Shrine (Chichiu Yo-Matsuri; Night Festival)



Terasaka Terraced Rice Paddies and Ruins

## Main Base Facilities

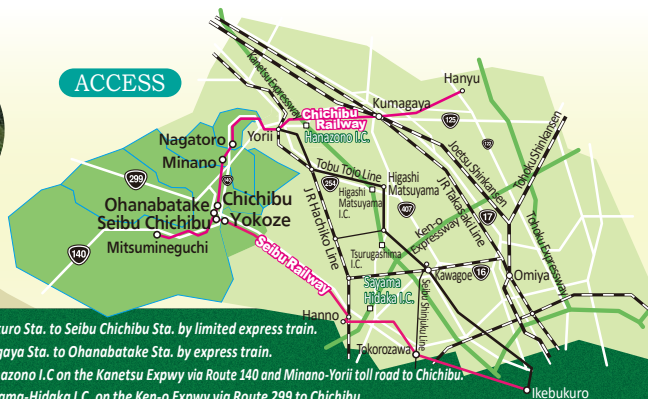


**Saitama Museum of Natural History**  
Exhibition of fossil, rocks, mineral, stuffed animals understanding of Saitama prefecture 300 million years background.  
\*\*\*\*\* Tel. +81-494-66-0404



**Fossil Museum of Ogano**  
Exhibition of skeleton barrel of a Paleoparadoxia and a precious fossil from domestic and international.  
\*\*\*\*\* Tel. +81-494-75-4179

## ACCESS



- Abt 80 min frm Ikebukuro Sta. to Seibu Chichibu Sta. by limited express train.
- Abt 60 min frm Kumagaya Sta. to Ohanabatake Sta. by express train.
- Abt 25km frm the Hanazono I.C on the Kanetsu Expwy via Route 140 and Minano-Yorii toll road to Chichibu.
- Abt 40km frm the Sayama-Hidaka I.C. on the Ken-o Expwy via Route 299 to Chichibu.

## The Chichibu Geopark Promotion Council

Chichibu Business Plaza 1F, 9-5, Kumagi-machi Chichibu-Shi, Saitama, 368-0032  
Tel: +81-494-26-5511 Email: geo@chichibu-omotenashi.com



ENGLISH

Iwa-Datami and Chichibu Red Criff

# Still alive... from time immemorial GEOPARK CHICHIBU

Unconformity of Maehara

No.4 Fudasho Stone Buddha Statues at Kinsho-ji Temple

Tafoni in No.32 Fudasho Hoshio-ji Temple

No.28 Fudasho Hashidatedo Temple and Limestone Criff

What is "GEOPARK"?

Geopark is not only a place where you can observe stratum, rocks, and topography. At Geopark, you can learn that the nature that the work of the earth nurture, and the history and culture of the people who lived there are also part of the story of the earth. Find the story of Chichibu's land while exploring the attractions of Geopark Chichibu.